

# State of Wyoming Corner Record

(In compliance with the *CORNER PERPETUATION AND FILING ACT*, Wyoming Statutes, 1997, Section 33-29-140, et. seq., and the Rules and Regulations of the Board of Registration for Professional Engineers and Professional Land Surveyors)

Reverse side of this form may be used if more space is needed.

Record of original survey and citation of source of historical information (if corner is lost or obliterated). Description of corner monumentation evidence found and/or monument and accessories established to perpetuate the location of this corner. Sketch of relative location of monument, accessories, and reference points with course and distance to adjacent corner(s) (if determined in this survey). Method and rationale for reestablishment of lost or obliterated corner.

G.L.O. Record: J. Wesley Hammond, U.S. Deputy Surveyor, July 28, 1872.  
80.00 Chains Set sand stone 20 x 14 x 4 for corner to sections 5,6,7,8,

Subsequent Record: Laramie County Road Records, County Field Book No. 7, Page 27, circa October 1, 1909, indicates the road was surveyed and notes "NE Cor Sec 7 - at Hall Place"

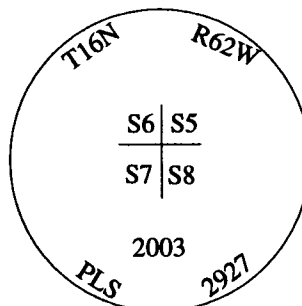
Laramie County Road Records, County Field Book No. 41, Page 2, circa July 15, 1930, indicates nothing being set at this corner location.

Found: No evidence of previous survey monumentation.

Set: At the intersection of Laramie County Roads No. 149 and 226, I set a No. 5 x 24" rebar with 2 1/2" diameter aluminum cap, marked as noted below, flush to the asphalt surface of Laramie County Road No. 149. After careful measurements to accepted corners and long time fences north and south, I accept this corner position as a faithful perpetuation of the original and subsequent surveys.

See back of this sheet for measurements to other found and or set and accepted corners in the area.

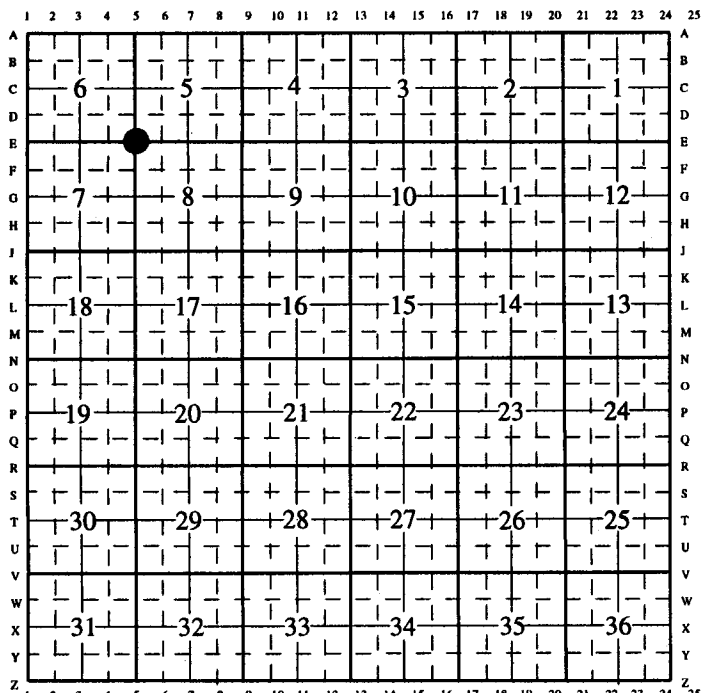
Aluminum Cap Markings



Date of Field Work: February 12, 2003

Office Reference: Burns North 26109

CROSS INDEX DIAGRAM

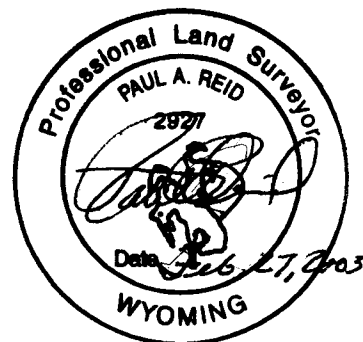


Firm/Agency, Address

Paul A. Reid, PLS  
1533 Pinion Drive  
Cheyenne WY  
Phone (307) 637-3400

This corner record was prepared by me or under my direction and supervision.

SEAL & SIGNATURE



Corner Name: Northwest Corner Section: 8 T.16 N., R. 62 W., 6th P.M., Cross-Index No.: E-5  
SBRPEPLS/PLSW: MARCH 1994/97

T.17N., R.62W., 6th P.M.      3/4" BRASS CAP  
 PLS 292T

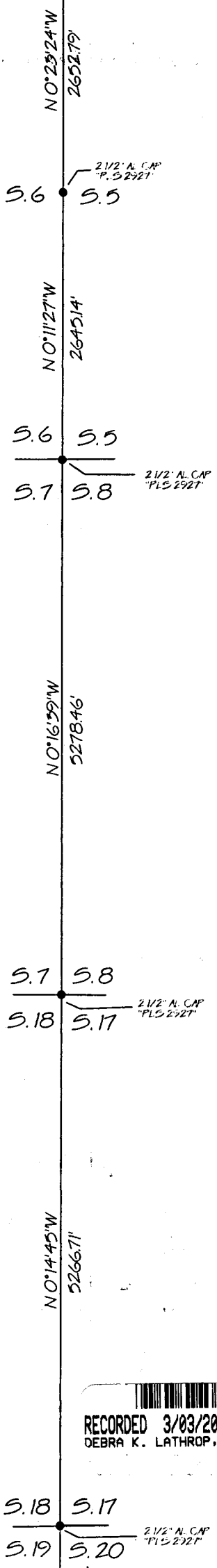
2" A. CAP  
 "LS 2821

N 89° 45' 34" E 5.31 532

1288.28'      1358.42'

2 1/2" A. CAP  
 "PLS 292T"      5.6      5.5      1354.70'

T.16N., R.62W., 6th P.M.



Bearings are grid and based upon the Wyoming East Zone NAD 83. Geodetic bearings can be derived by applying -0° 32' 21" to the bearing.

RECORDED 3/03/2003 AT 3:56 PM REC# 345417 K# 1707 PG# 1515  
 DEBRA K. LATHROP, CLERK OF LARAMIE COUNTY, WY PAGE 2 OF 2